



# LOOMINOLOGY

THE HEART OF THE LOOM

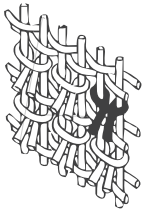


[www.loominology.com](http://www.loominology.com)



### **50 YEARS OF EXPERIENCE**

For years and years, we travel along with our customers, suppliers, and employees together with our LOOMINOLOGY brand in the future...



### **EXCELLENT QUALITY**

The designs that our designers have prepared with their creative intelligence, we combine it with the mastery of our craftsmen.

Our love for this accumulation and our work exposes the heritage quality rugs that you may use for many years.



### **WIDE RANGES OF PRODUCT**

- **ORIGINAL TURKISH DOUBLE KNOT RUG PRODUCTION**

We started our Turkish hand-knotted rug weaving adventures in 1963 in Turkey and now extended our production capacity yearly 5000m2 without sacrificing the characteristics of Turkish double knotting system in Turkey, Bangladesh, and India.

- **TIBETIAN WEAVING,**

We carefully choose the most special materials that have the gift of nature to us like silk and wool. Tibetan weaving is one of the best production for custom orders we produce in Nepal.

- **HAND/AUTO TUFT PRODUCTION**

We began to manufacture Autotuft Custom order carpets for residential and commercials five years ago with the experience we have accumulated in hand-knotted rugs production.

We have the capacity around 2000m2 monthly which we make the production in Turkey/Istanbul with high-quality materials.

### **FAST PRODUCTION & DELIVERY**

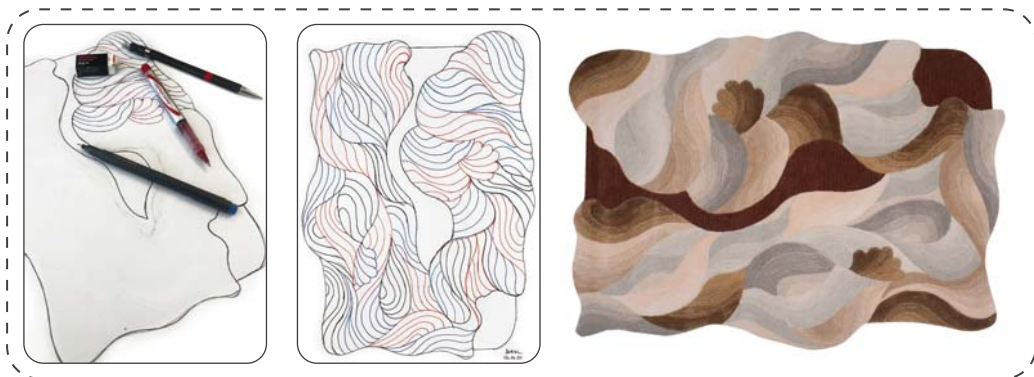
Due to we produce the orders in-house, the lead time for custom orders is very quick like 4 weeks.



Loominology will be happy to be a partner preparing your current projects with our professional designers, selecting colors and right materials.

We wish you a pleasant business...

## MAKE YOUR CUSTOM CARPET / RUG



Select Design  
From Our Source

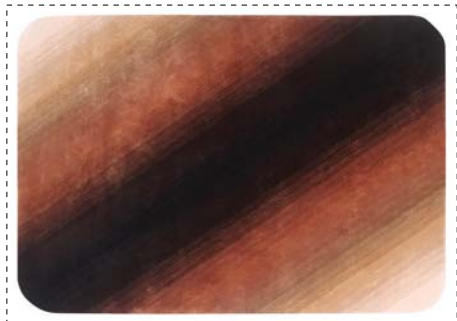


Send Your Design



### SIZE

Max. size: 36'x45'  
Max. size: 11x14 m.



### FREE SHAPE

Max. size: 36'x45'  
Max. size: 11x14 m.



PRODUCTION IN İSTANBUL





# LOOMINOLOGY



| GRADIENT 003 TX



**Design:** GRADIENT 003 TX  
**Composition:** 100% VISCOSE



**Design:** PANDORA 004 IX  
**Composition:** 90% VISCOSE & 8% WOOL & 2% METALLIC YARN



**Design:** OVOID 007 TW  
**Composition:** 50% WOOL & 50% VISCOSE



**Design:** HELIX 007 TX  
**Composition:** 50% WOOL & 50% VISCOSE

# LOOMINOLOGY



|CELL 003 TS





**Design:** CELL 003 TS  
**Composition:** 50% WOOL & 50% VISCOSE



**Design:** QUARTZ 002 TS  
**Composition:** 50% WOOL & 50% VISCOSE



**Design:** LAVA 003 TB  
**Composition:** 50% WOOL & 50% VISCOSE



**Design:** NAITULUS 003 TS  
**Composition:** 50% WOOL & 50% VISCOSE

LOOMINOLOGY



|HELIX 006 TB





**Design:** HELIX 006 TB  
**Composition:** 50% WOOL & 50% VISCOSE



**Design:** CELL 001 TB  
**Composition:** 100% VISCOSE



**Design:** PLEAT 002 SH  
**Composition:** 50% WOOL & 50% VISCOSE



**Design:** WEAVE 002 TB  
**Composition:** 50% WOOL & 50% VISCOSE

# LOOMINOLOGY

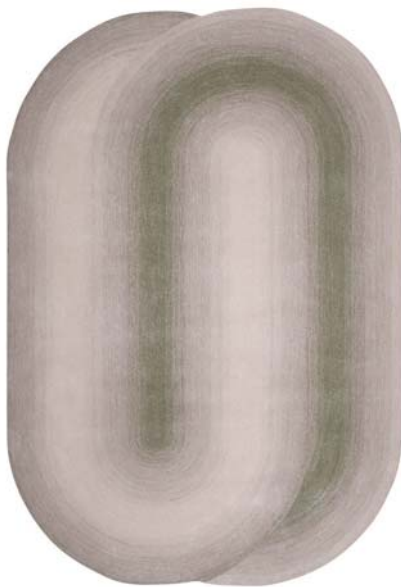


GEO 002 GF





**Design:** GEO 002 GF  
**Composition:** 50% VISCOSE & 50% WOOL



**Design:** GEO 005 GB  
**Composition:** 50% WOOL & 50% VISCOSE



**Design:** LAVA 002 HB  
**Composition:** 100% VISCOSE



**Design:** ROCK 004 GB  
**Composition:** 50% VISCOSE & 50% WOOL



# LOOMINOLOGY



| LAVA 003 FG



**Design:** LAVA 003 FG  
**Composition:** 50% WOOL & 50% VISCOSE



**Design:** CELL 001 FG  
**Composition:** 50% WOOL & 50% VISCOSE



**Design:** LAVA 001 FG  
**Composition:** 50% VISCOSE & 50% WOOL



**Design:** PANDORA 001 FX  
**Composition:** 90% VISCOSE & 8% WOOL & 2% METALLIC YARN



# LOOMINOLOGY



| PANDORA 002 JX |





**Design:** PANDORA 002 JX  
**Composition:** 90% VISCOSE & 8% WOOL & 2% METALLIC YARN



**Design:** LAVA 002 JY  
**Composition:** 50% WOOL & 50% VISCOSE



**Design:** QUARTZ 001 J  
**Composition:** 50% WOOL & 50% VISCOSE



**Design:** TRIPLE 003 J  
**Composition:** 50% WOOL & 50% VISCOSE

# LOOMINOLOGY



LOVOID 006 S



**Design:** OVOID 006 S  
**Composition:** 50% WOOL & 50% VISCOSE



**Design:** OVOID 001 F  
**Composition:** 95% VISCOSE 5% WOOL



**Design:** GEO 005 SX  
**Composition:** 50% WOOL & 50% VISCOSE



**Design:** ROCK 006 F  
**Composition:** 50% WOOL & 50% VISCOSE



# LOOMINOLOGY



| CELL 001 BG



**Design:** CELL 001 BG  
**Composition:** 100% VISCOSE



**Design:** PANDORA 003 BG  
**Composition:** 90% VISCOSE & 8% WOOL & 2% METALLIC YARN



**Design:** LAVA 001 BG  
**Composition:** 100% VISCOSE



**Design:** HELIX 001 BG  
**Composition:** 60% VISCOSE 40% WOOL



LOOMINOLOGY



| ROCK 001 A





**Design:** ROCK 001 A  
**Composition:** 100% VISCOSE



**Design:** PLEAT 003 A  
**Composition:** 95% VISCOSE & 5% METALLIC YARN



**Design:** TRACEMAX 001 A  
**Composition:** 100% VISCOSE



**Design:** QUARTZ 001 A  
**Composition:** 100% VISCOSE

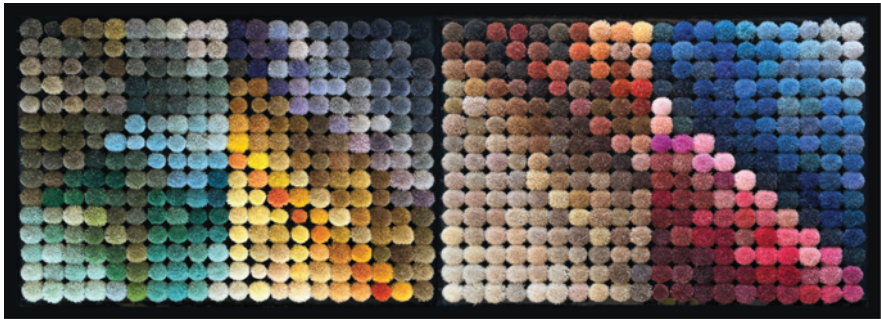
# MAKE YOUR CUSTOM CARPET / RUG

## COLOR

Wool & Viscose Standard Colors



More Colors Options



## TEXTURE

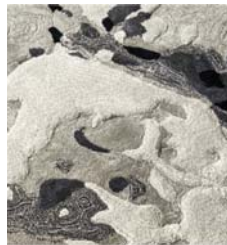
Surface



Cut Pile



Loop Pile



High&Low Pile



Carving

Material



Wool



Viscose



Wool&Viscose



Metallic Yarn

# HAPPY FEEDBACK



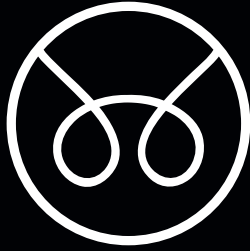
## REFERENCES

- Sheraton Amman Al Nabil Hotel, Jordan
- Yalihan Hotels & Resorts Antalya, Turkey
- Adidas Showroom Carpets, Galataport Istanbul, Turkey
- Lobby, Suite Carpets, Four Seasons Hotel Istanbul, Turkey
- Lobby Carpets, Swissotel Resort & Spa Çeşme, İzmir, Turkey
- Guestroom, Corridor Carpets, The Lusso Hotel Abuja, Nigeria
- Guestroom, Corridor Carpets, The Del Hotel Lagos, Nigeria
- Nuaimi Private Villa Doha, Qatar
- Bahrain King Private Majlis, Al Hidd, Kingdom of Bahrain
- Celebrity Houses in Texas
- Celebrity Houses in Moscow
- Tommy Hilfiger, Stores, Turkey
- Public Area's Carpets Sheraton Hotel Tel Aviv Israel
- Villa Project, Dallas
- Private Home, Monaco
- Penthouse Paris
- Quadrant Stores by Krn Interiors
- Monaco Residential House
- Villa Projects at Kazakhstan, Uzbekistan, Qatar
- Public Area Carpets, Neva Tower, Moscow, Russia
- Suites and Guestrooms Carpets, Reges Hotel Cesme, Izmir, Turkey
- Suites and Guestrooms Carpets, Sheraton Hotel, Tel-Aviv, Israel
- Lobby, Suite Carpets, Four Seasons Hotel Istanbul, Turkey
- Lobby Carpets, Swissotel Resort & Spa Çeşme, İzmir, Turkey
- Guestroom, Corridor Carpets, The Lusso Hotel Abuja, Nigeria
- Guestroom, Corridor Carpets, The Del Hotel Lagos, Nigeria
- Nuaimi Private Villa Doha, Qatar
- Bahrain King Private Majlis, Al Hidd, Kingdom of Bahrain
- Celebrity Houses in Texas
- Celebrity Houses in Moscow
- Tommy Hilfiger, Stores, Turkey
- Public Area's Carpets Sheraton Hotel Tel Aviv Israel
- Villa Project, Dallas
- Private Home, Monaco
- Penthouse Paris
- Quadrant Stores by Krn Interiors
- Monaco Residential House
- Villa Projects at Kazakhstan, Uzbekistan, Qatar
- Public Area Carpets, Neva Tower, Moscow, Russia
- Suites and Guestrooms Carpets, Reges Hotel Cesme, Izmir, Turkey
- Suites and Guestrooms Carpets, Sheraton Hotel, Tel-Aviv, Israel
- Prayer Room Carpet, Mersin Hilton, Mersin, Turkey

## CERTIFICATES







**LOOMINOLOGY SHOWROOM**

SKYLAND HOM DECORATION CENTER NO:121 SARIYER / ISTANBUL